

LOW CARBON, RECYCLABLE

MACKINTOSH®

POLYPROPYLENE

axroma
OUTDOOR PERFORMANCE FABRICS



MACKINTOSH®

Mackintosh® fabrics feature a proprietary technology that infuses the most advanced PFAS-free, permanent waterproofing polymer, polypropylene pellets, and highly UV-resistant pigments within the yarn itself. With a lower melting point, these materials are mixed together, extruded, stretched, texturized and air-spun to create unique Mackintosh® yarns that maintain superb water and moisture repellence even in the rainiest weather and through dozens of wash cycles.

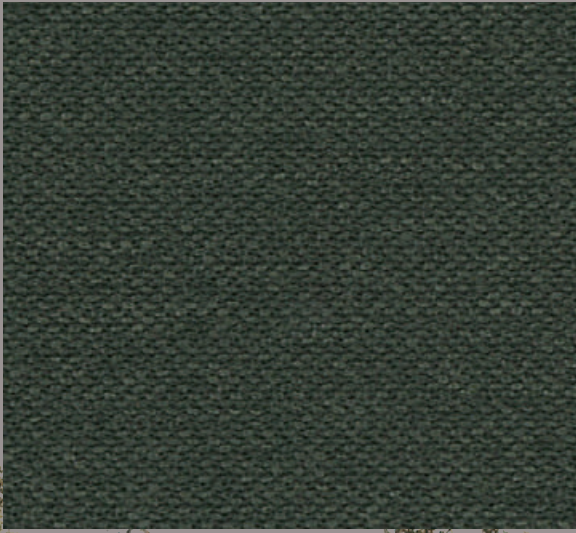
Mackintosh® yarns are woven in various patterns and constructions and are then finished simply with a thorough scouring and cleaning that activates the permanent water repellency. Unlike other fabrics, no additional finishing chemicals are required and no PFAS forever chemicals (perfluorocarbons, perfluoroalkyls, and polyfluoroalkyls) are generated or released into the environment.

Axroma invites you to discover the infinite possibilities of our Mackintosh® technology.



Monochrome

Abrasion: ISO 12947-2 20,000 cycles Grade 4
Hydrostatic Pressure: 300mm
Rain Test Method: AATCC 35 (Standard 1.0g) < 0.1g



Moss 401.102



Cloud 609.102



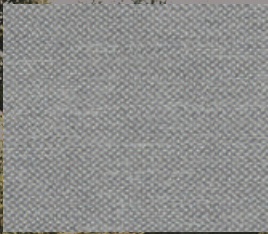
Pearl 608.102



Chiatea 601.102



Fog 605.102



Marble Grey 702.102



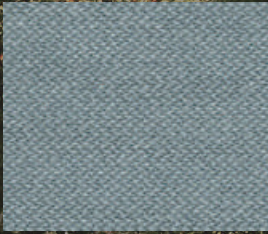
Mint 404.102



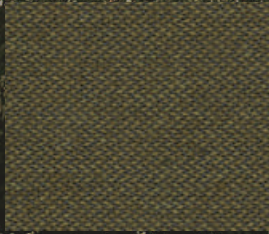
Flax 602.102



Marron 603.102



Blue Steel 504.102



Olive 402.102



Onyx 701.102



Steel 705.102



Pineapple 301.102



Salsa 101.102



Firenze Bouclé

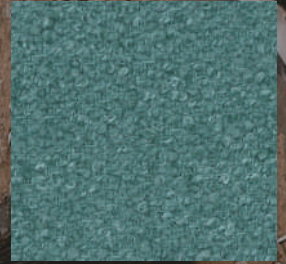
Abrasion: ASTM D4966 40,000 rubs



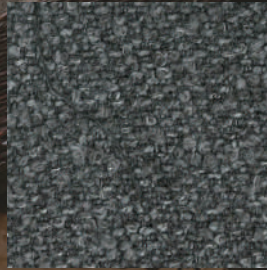
Grey 702.812



Snow 601.812



Teal 401.812



Charcoal 701.812



Oatmeal 603.812

Bold Basket

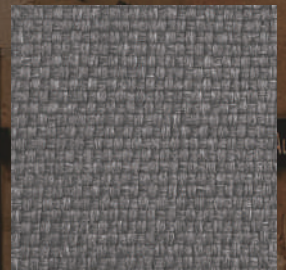
Abrasion: ASTM D4966 50,000 rubs



Wheat 301.811



Grey 701.811



Iron Grey 702.811



Oatmeal 601.811



Brick 201.811



Charcoal 703.811

Sunspot

Abrasion: ASTM D4966 15,000 rubs



Toffee 602.219



Cool Gray 703.219

Alpine

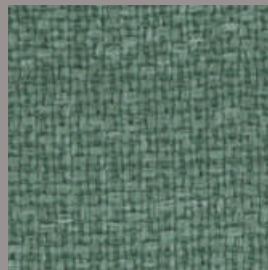
Abrasion: ASTM D4966 36,000 rubs



Glacier Ice 603.809



Andes Greystone 602.809



Sage Green 402.809



Amazon 403.809



Piana Flax 702.809



Beige 604.809



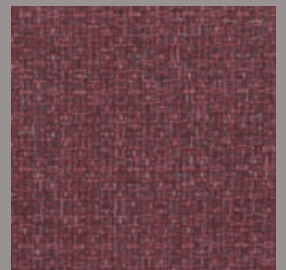
Highland Charcoal 701.809



Haze Blue 501.809



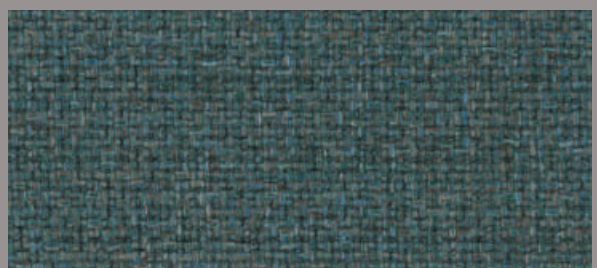
Ebony 703.809



Chianti Red 101.809



Atlas Sand 601.809



Verdigris Jade 401.809

Rocky Mountain

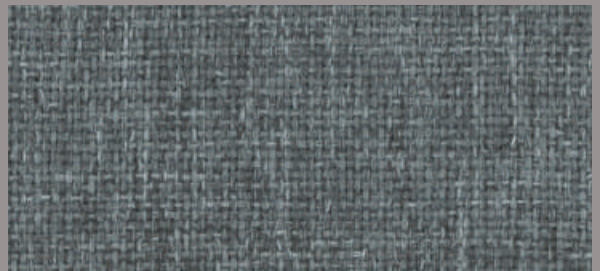
Abrasion: ASTM D4966 56,000 rubs



Mist Gray 703.813



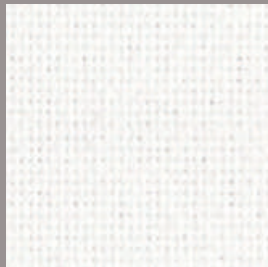
Navajo White 603.813



Basalt Rock 701.813



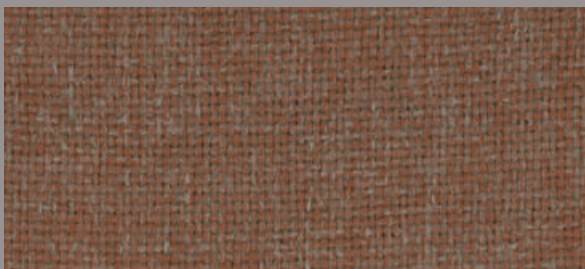
Smoke Grey 604.813



Snow 605.813



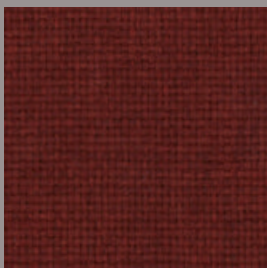
Moose Brown 602.813



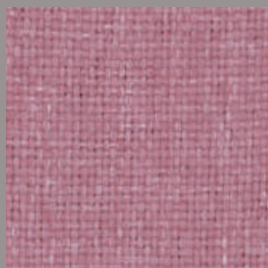
Brick 103.813



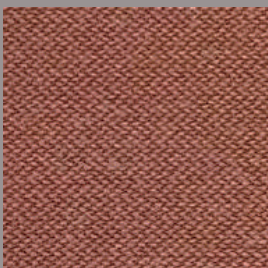
Olive 405.813



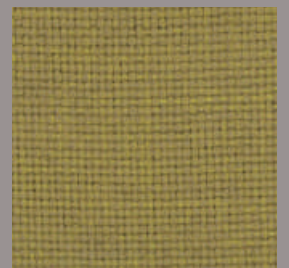
Crimson Red 101.813



Rosebloom 104.813



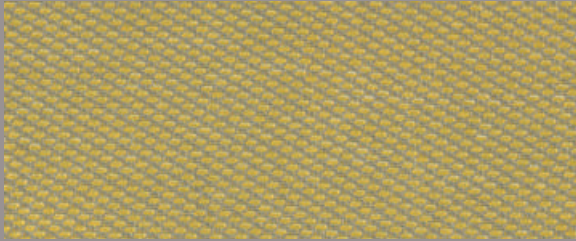
Clay 102.813



Yellow Jasmine 302.813

St.Tropez

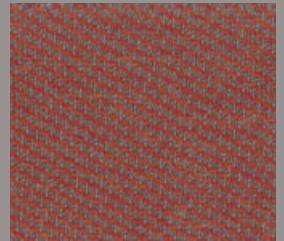
Abrasion: ISO 12947-2 50,000 cycles Grade 4



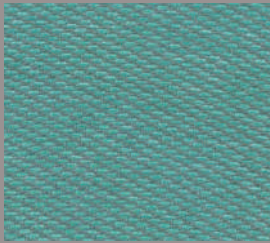
Citron 301.804



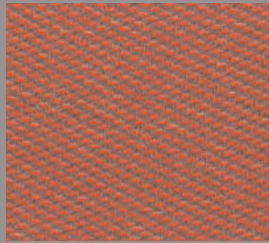
Aegean 401.804



Cayenne 101.804



Lakeside 501.804



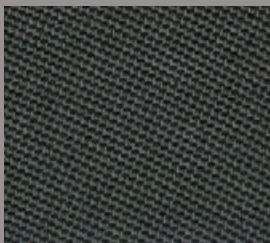
Tuscan 201.804



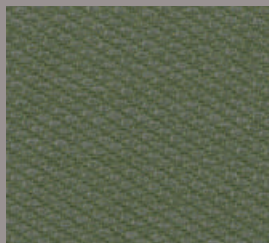
Jade 402.804



Graphite 604.804



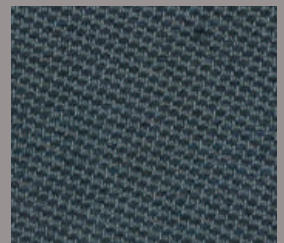
Carbon 701.804



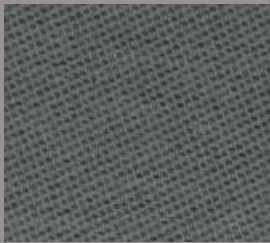
Olive 403.804



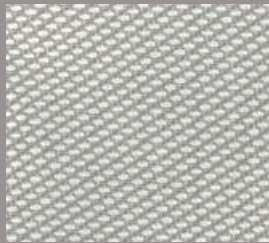
Taupe 602.804



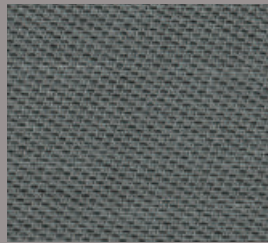
Midnight 502.804



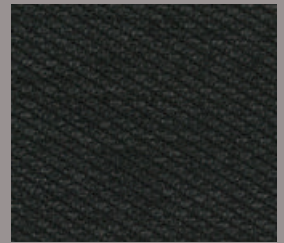
Charcoal 603.804



Dove 601.804

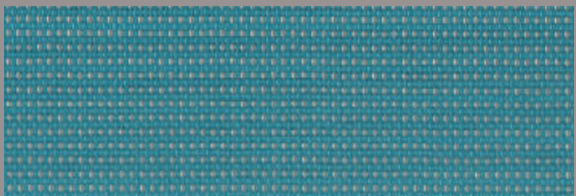


Steel 702.804

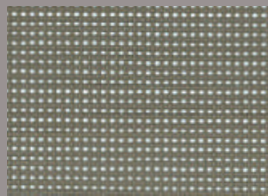


Black 703.804

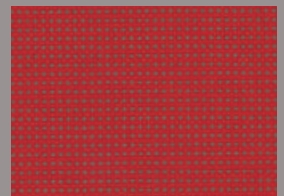
Birdeyes



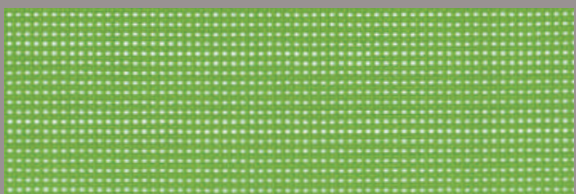
Lakeside 501.808



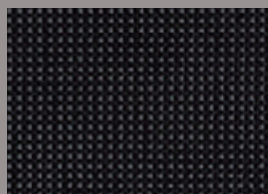
Hemp 602.808



Garnet 101.808



Lime 401.808



Charcoal 701.808

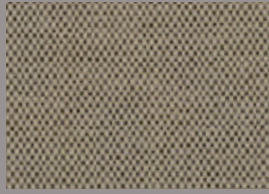


Oatmeal 601.808

Canvas



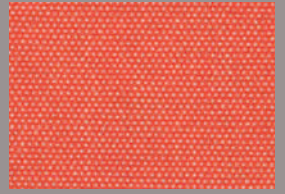
Garnet 103.800



Wheat 603.800



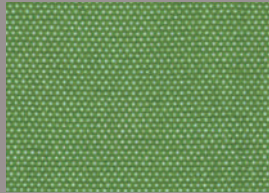
Ivory 604.800



Tuscan 203.800



Lakeside 506.800



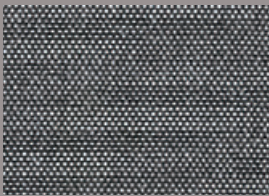
Celery 404.800



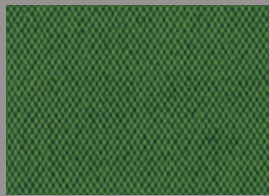
Azure 507.800



Midnight 508.800



Cement 706.800



Amazon 403.800



Stone 703.800



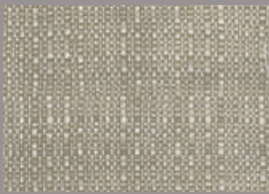
Steel 705.800



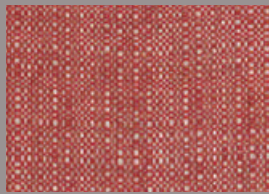
Feather Gray 704.800

Médoc

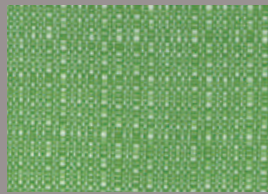
Abrasion: ISO 12947-2 50,000 cycles Grade 4



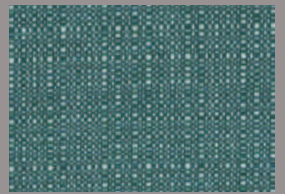
Hemp 602.805



Poppy 101.805



Lime 401.805



Peacock 502.805



Oatmeal 601.805



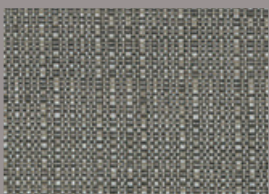
Graphite 604.805



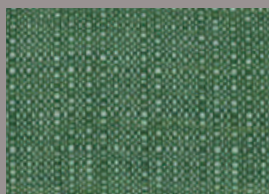
Charcoal 702.805



Lakeside 501.805



Sesame 603.805



Amazon 402.805

Think Green and Be Persistent **Axroma Innovative Mackintosh® Polypropylene**

Axroma has led the way in sustainable manufacturing for over 30 years. We keep investing in innovative processes and materials to help reduce our environmental impact and bring performance fabrics to the market.

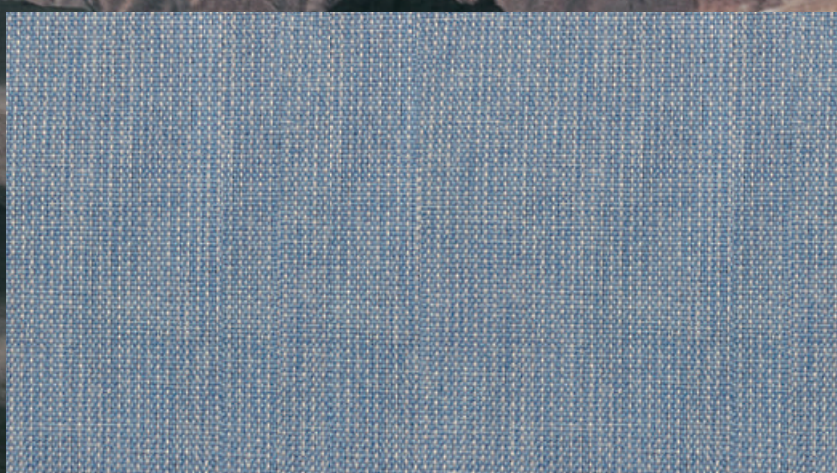
Mackintosh® fabrics feature a proprietary technology that infuses advanced PFAS-free, permanent waterproofing and UV-resistant pigments within the yarn itself. This process yields fabrics with long-lasting performance that meet or exceed industry requirements while using the least amount of water, energy, and chemicals during production. Our innovation enables us to provide a wide variety of performance-driven designs featuring unique weaving patterns and a pleasing, soft hand; perfect for RV, residential, contract and outdoor furniture applications.

Axroma's founder keeps a green mindset and through his persistence and commitment, we are pursuing ultimate circularity in woven fabrics. Mackintosh® solution-dyed polypropylene fabrics can be made using certified post consumer waste from reliable sources. They can also be easily recycled at the end of the product's life through a relatively simple mechanical process, while most other fabrics require additional mechanical, chemical, and heat inputs during recycling. Axroma has also created a dedicated supply chain for processing end-of-life fishing nets and ropes, investing in our own plants that harvest and recycle these materials for use in our fabrics and in other applications.



Aquadura

Axroma proudly introduces the Aquadura series of Mackintosh® recycled fabrics. Made of worn out fishing gears pulled from our oceans, Aquadura is certified to use authentic ocean-bound and ocean-claimed plastic waste that is properly traced, managed, transported, refined, recycled into pellets, and extruded into textile-grade fibers. We are the pioneer in upcycling discarded fishing gears through a mechanical process that uses the least water, energy and chemicals, and generates the lowest carbon footprint. With Axroma's innovative and proprietary Mackintosh® technology inside the yarn, the Aquadura series delivers on performance, appeal, and sustainability.



21F072-11



21F072-24



21F072-23



21F072-26



21F072-25

Fire Island

10" W Repeat



Hemp 601.210



Tuscan 201.210



Jade 401.210



Midnight 502.210



Lakeside 501.210



Lime 402.210



Steel 702.210



Charcoal 701.210

Vanity

10" W Repeat



Tuscan 202.204



Amazon 402.204



Citron 302.204



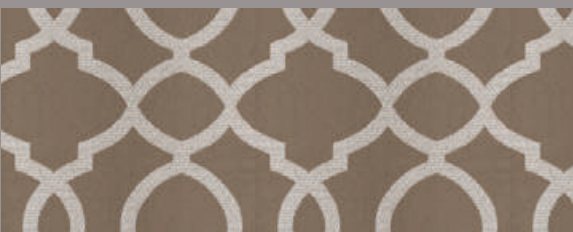
Azure 504.204



Lakeside 502.204



Charcoal 702.204



Hemp 602.204



Garnet 102.204



Midnight 506.204

Parker Stripe

20" W Repeat



Hemp 602.201



Azure 504.201



Charcoal 702.201

Bluemoon

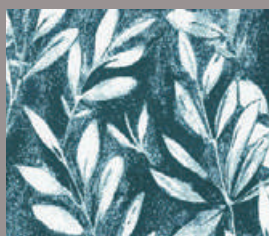
20" W Repeat



Hemp 601.207



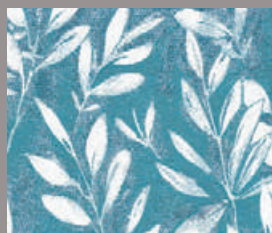
Poppy 201.207



Aegean 401.207



Midnight 502.207



Lagoon 501.207



Amazon 402.207



Steel 702.207



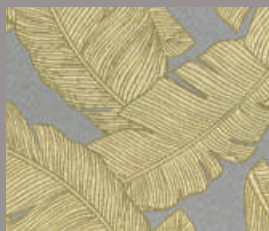
Charcoal 701.207

Nightingale

20" W Repeat



Hemp 602.202



Citron 302.202



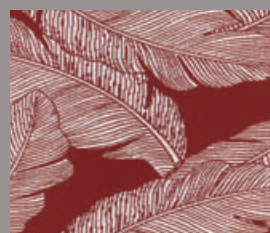
Midnight 506.202



Tuscan 202.202



Azure 504.202



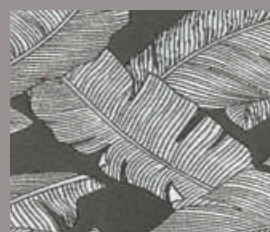
Garnet 102.202



Lakeside 502.202



Amazon 402.202



Charcoal 702.202

Parker Stripe

20" W Repeat



Tuscan 202.201



Garnet 102.201



Citron 302.201

Monstera

20" W Repeat



Celery 401.211



Lime 301.211



Azure 501.211



Citron 302.211

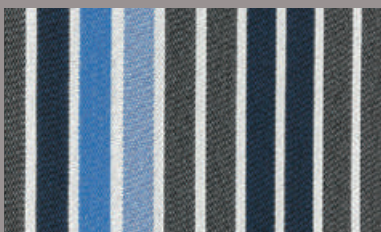


Stone 701.211



Parker Stripe

20" W Repeat



Midnight 506.201



Lakeside 502.201



Amazon 402.201

Bean

10" W Repeat



Garnet 102.203



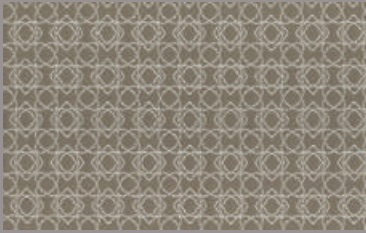
Citron 302.203



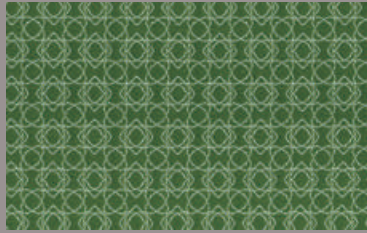
Lakeside 502.203

Harley

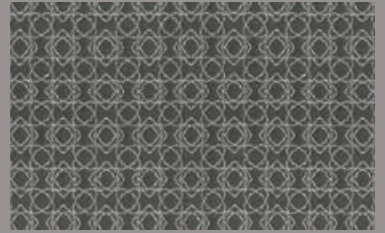
3.3" W Repeat



Hemp 602.205



Amazon 402.205



Charcoal 702.205

Petit Morocco

20" W Repeat



Poppy 201.206



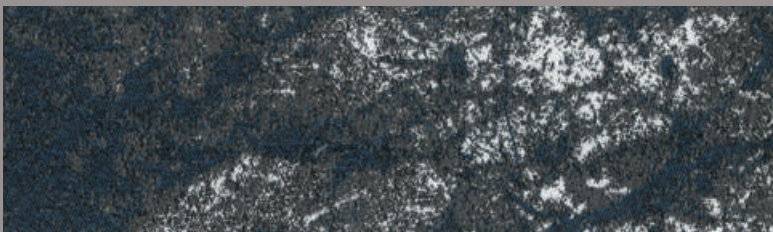
Midnight 502.206



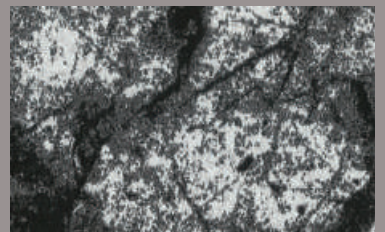
Charcoal 701.206

Marbling

10" W Repeat



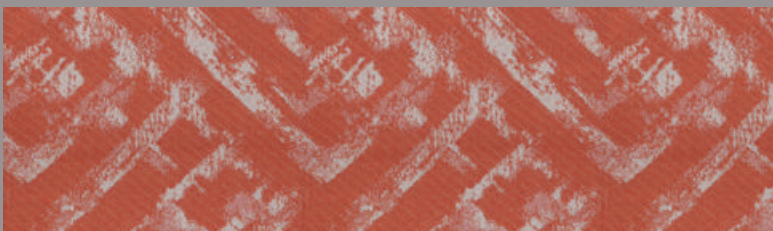
Midnight 501.213



Charcoal 701.213

Blurkey

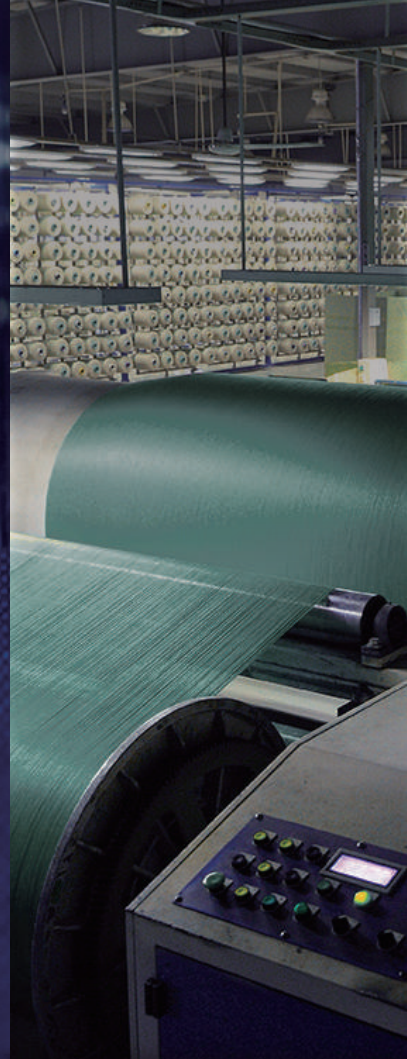
10" W Repeat



Poppy 201.212



Charcoal 701.212



axroma
OUTDOOR PERFORMANCE FABRICS

TAIWAN AXROMA TECHNICAL TEXTILE CO., LTD.

No.636 Hsi-Ping Road, Douliou City,
Yunlin Hsien, Taiwan 64057

T: 886-5-5511008 F: 886-5-5511010


AXROMA TECHNICAL TEXTILES (LIANYUNGANG) CO., LTD.

No.25, YuZhou Road(South), Haizhou Development Zone,
Lianyungang City, JiangSu Province, China 222062


T: 86-518-85910058 F: 86-518-85910057

AXROMA OCEANA (LIANYUNGANG) SUSTAINABLE MATERIAL CO., LTD.

No.1, Fumin Road, Xijidang Village, Zhewang Town,
Ganyu District, Lianyungang City, Jiangsu Province, China 222000

 www.axroma.com

 axroma

 #axromafabrics

 Axroma Oceana